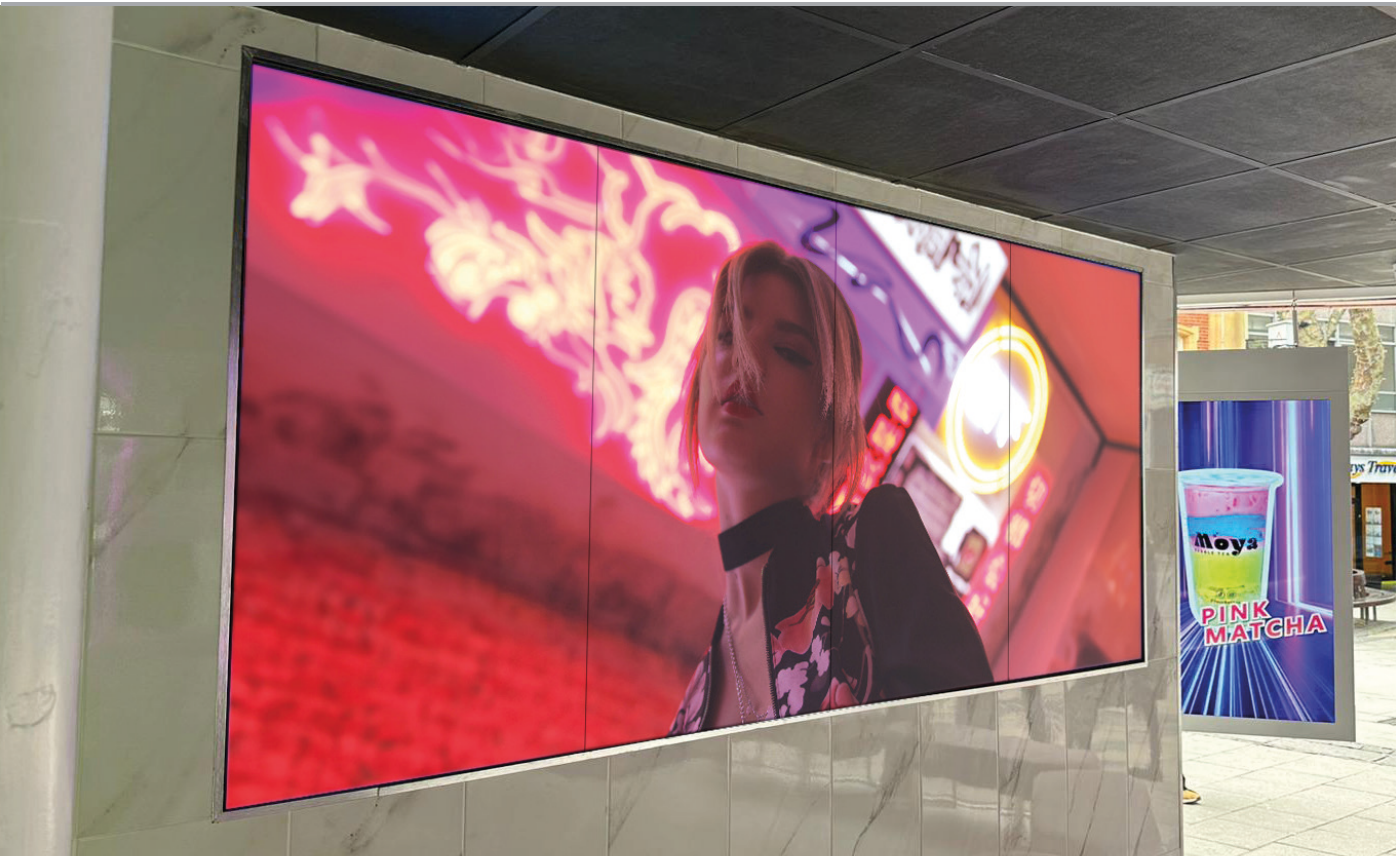


# 55" Ultra-Narrow Bezel LCD Video Wall Displays

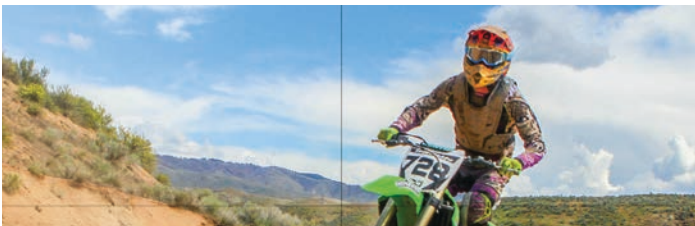


*The ultimate eye-catching solution that creates immersive experiences thanks to their near invisible 0.44mm even bezels*

## Razor-Thin 0.44mm Even Bezel

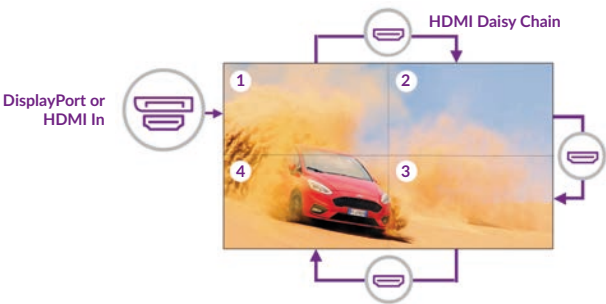
With a total screen-to-screen bezel size of 0.88mm these displays create a seamless video wall – providing you with an eye catching, and content focused display. This means that each 0.44mm near invisible bezel is even thinner than the size of a pixel! We also have a more budget friendly 3.5mm bezel version available for projects that require a more cost effective solution.

 **0.88mm Screen-To-Screen**



## 4K Daisy Chain Tiling

These displays feature HDMI in and outputs, allowing you to daisy chain up to a 4K signal once connected. The integrated matrix processor significantly cuts the cost of external hardware, installation and maintenance, providing a cost-effective solution while still maximizing video quality with an immersive viewing experience.



0.44mm Even Bezel / 0.88mm  
Screen to Screen



Eco Friendly Power Timer



Temperature Control



Remote Commands



Landscape/Portrait Orientation



Easy Install Handles



Slim and Lightweight Design



Reliable Displays



Anti-Glare Panel

# Other Features

## Fantastic Colours

To keep colour variation between panels to a minimum, colours are pre-calibrated, with the option to be adjusted once installed. The LED backlight technology also offers an incredible contrast ratio performance with deeper blacks and brighter whites, creating an enhanced colour intensity.



## 4K Compatible Video Wall

With large video walls content resolution is very important. If you have a 4K source you can achieve extraordinary image quality and ultra-high definition without the need to scale devices or purchase any external matrix controller.



## 24/7 Commercial Grade

These displays use a commercial grade LCD panel and LED components. They have the ability to be in constant use 24/7 for over 70,000 hours and have no external buttons or controls to avoid tampering.



## TCP/IP Remote Commands\*

Where RS-232 commands allow remote control over devices connected directly to the screens via a wired serial connection; TCP/IP control allows commands to be distributed via the local network or even over the internet with the use of port forwarding. The inclusion of this feature greatly enhances compatibility for control via AV room control systems.



\*Available on request

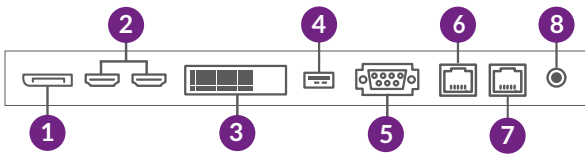
## 500cd/m² IPS Panel

With a brightness of 500cd/m² that ensures high visibility even under bright ambient light, these commercial grade IPS panels are designed to achieve ultimate lifelike colour with a remarkable viewing angle of 178° in both landscape and portrait.



## Multiple Inputs

Featuring HDMI and DisplayPort inputs, these displays are ideal whether the screens are being used individually, as part of a video wall using the internal video matrix processor or being run from an external matrix controller.



- 1. DisplayPort
- 2. HDMI In and HDMI Out
- 3. DVI
- 4. USB (Firmware Updates)
- 5. VGA
- 6. RS-232 In
- 7. RS-232 Out
- 8. Audio Out

## Anti-Glare Surface Treatment

These displays feature a specially treated anti-glare finish with the perfect amount of haze. This completely diffuses external light reflections without reducing the brightness of the screen, maximising the readability of on-screen content. This makes them perfect for monitoring rooms and other environments with bright ambient lighting conditions.



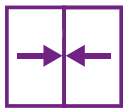
## Optional External Network Upgrade

With our Cloud Network Media Player, you can connect your video wall via Wi-Fi, LAN or 4G, and then remotely update it over the internet. Additionally, you can manage the content displayed with our user-friendly content management system.





Key Features



0.88MM ULTRA NARROW BEZEL



ULTRA RESISTANT TO BLACKENING DEFECT



LANDSCAPE OR PORTRAIT ORIENTATION



ULTRA SLIM PROFILE



ANTI-GLARE IPS PANEL

24/7 COMMERCIAL GRADE

SILENT RUNNING

VESA COMPATIBLE MOUNTING



4K DAISY CHAIN TILING

0.88MM ULTRA NARROW BEZEL

EASY INSTALLATION HANDLES

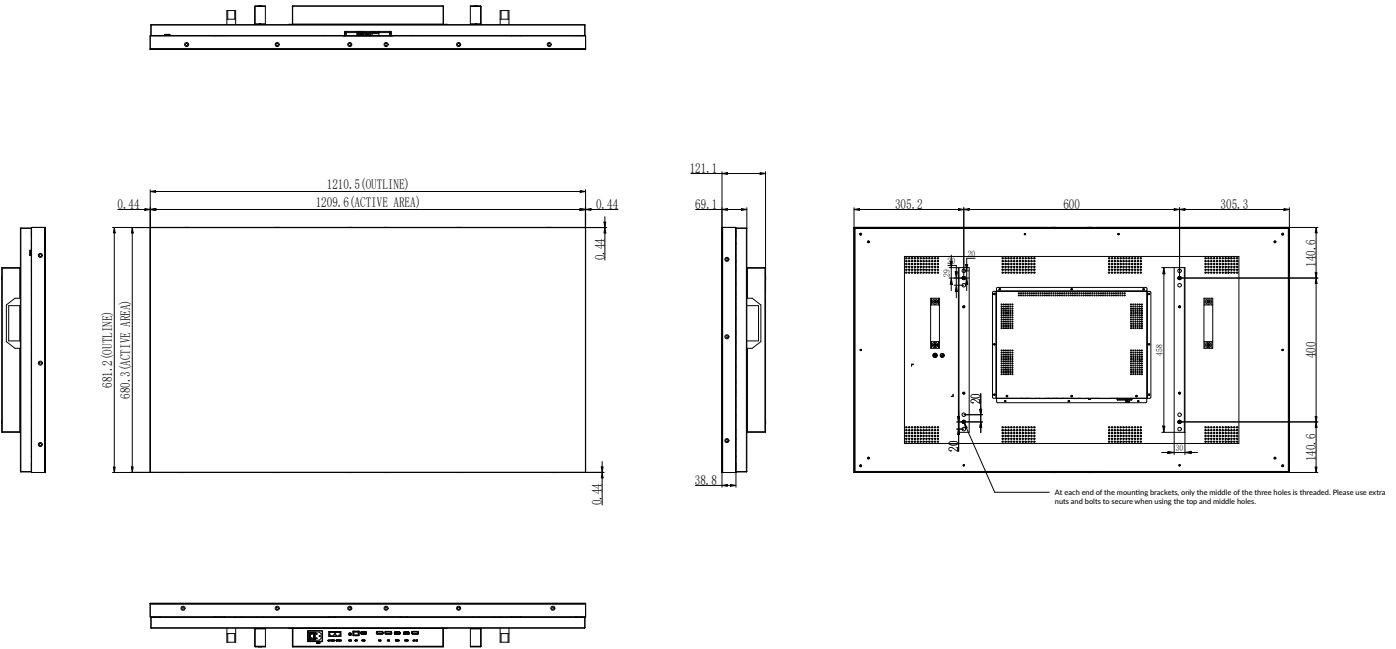
VIVID COLOUR DISPLAY

Specification Table

V.1.0		TL55S2
Display	Resolution	1920 x 1080 @60Hz
	Bezel Width [mm]	0.44
	Display/Active Area [mm]	1209.6 x 680.3
	Aspect Ratio	16:9
	Brightness [cd/m²]	500
	Colour	16.7M (8bit); 72% NTSC
	Haze Level	28%
	Viewing Angle [°]	89/89/89/89
	Contrast Ratio	3,500: 1
	Orientation Support	Landscape / Portrait
Connectivity & Interface	Operating Hours	24/7 Commercial Use
	HDMI	1 x HDMI In 1x HDMI Out
	USB	1 x USB
	RS232	1 x RS232 In 1 x RS232 Out
	DVI	1 x DVI
	DisplayPort	1 x DisplayPort
	VGA	1 x VGA
	Audio Out	1 x 3.5mm Audio Out
	Power Input	1 x IEC C13 (Kettle Lead)
Power Management	Switch	1 x Power Switch
	Power Supply	AC 100–240V, 50/60Hz
	Power Consumption	Typical: TBC; Max: 250W
Dimensions & Weight	Standby Power	≤0.5W
	Screen Dimensions (mm)	1210.5 x 681.2 x 121.1
	Package Dimensions (mm)	1345 x 820 x 220
	VESA Mounting (mm)	600 x 400 M6
	Net Weight	23.4
Environmental Conditions	Gross Weight	29.5
	Operating Temperature [°C]	0 to 45°C
	Storage Temperature [°C]	-20°C to 65°C
	Operating Relative-Humidity [%]	10% to 90%
Accessories	Storage Relative-Humidity	5% to 95%
	Included Accessories	Kettle Power Lead (1.5m); HDMI Cable (1.5m), LAN Cable and IR Sensor, Remote Control + Batteries; User Manual (QR Code x2); Quick Start Guide
	Optional Accessories	Network or Standalone Media Player, Touch Screen Frame
Warranty	Warranty Period	3 Years
	Technical Support	Lifetime



# Technical Drawing

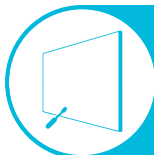


## Why Choose Our Commercial Display Solutions?



### Lifetime Technical Support

From the moment you receive your product, throughout the duration of your warranty and even after your warranty has expired we are here to support you. If you require any assistance setting up or using your product, or have any problems at all, we can provide free technical support via telephone and email.



### On-site Support and Maintenance\*

If needed, we can provide an installation service for any of our products. We can also set up service-level agreements for larger projects that require maintenance contracts.



### Extended Warranty\*

All of our commercial display products come with a 3 year commercial warranty as standard but if you want to extend this you can upgrade this to cover a 5 year period at point of purchase.



### Training

As well as providing free remote CMS training sessions and webinars we can also visit you to deliver bespoke training for our software and hardware\*.



### Advanced Replacements†

Should your display suffer from any kind of hardware failure during the warranty period we will send you an advanced replacement and arrange for your old display to be collected, free of charge. This ensures no downtime where you are without a screen.



### Custom Product Testing & Configuration

If you need us to test third party software or a website, or configure your screen in a particular way before it is dispatched (e.g. in a particular orientation or network mode), we can do so to make your life easier.



### 3D Rendering

Want to know how a particular screen will look once installed? Send us a photo of the location and we will create a 3D rendering of any screen in situ to help you to visualise how amazing it will look.



### Logistics Support

We hold more stock in our UK warehouse than any other manufacturer so we can help you meet tight deadlines. For last minute orders we can also offer special express or morning delivery options\*. We also carry out UK based quality control checks on every display before it leaves our warehouse.



### Project Support

If you need to loan a sample unit to test we'd be more than happy to arrange this. We can also provide a rental service for temporary projects\*.



### Customisation\*

Your display can be customised to suit your requirements by adding your logo or printed graphics or even tailoring the colour of a display. We can also carry out hardware modifications to existing products or manufacture bespoke solutions for special projects.



### Extras\*

As well as being able to provide accessories and add-ons, such as extra remote controls, NUC PCs and video wall controllers, we can also supply custom made flight cases which are great if a display needs to be moved safely from place to place.

†UK mainland only

\*These particular services may incur additional charges